

Resources and reference ideas

:Abraham's Lady

www.abrahamslady.com/index.htm

Supplier of Civil War era clothing and accessories.

Acme Notions

AcmeNotions.com/

A large variety of vintage, modern and unique sewing notions.

Burnley & Trowbridge

www.BurnleyAndTrowbridge.com/

Providing an assortment of Fabrics, Notions, Patterns, Research Books, Shoes and Accessories. Specializing in 17th, 18th and early 19th Century.

Dharma Trading Co.

www.DharmaTrading.com

Textile craft supplies and basic fabrics such as cottons, silk, linen, rayon, hemp, and BAMBOO. Extensive supplies for fabric dyeing and painting.

Jas. Townsend & Son

www.Jas-Townsend.com

Mail order company that supplies 18th and 19th century reproductions for living history. They specialize in Historic Clothing, Camp Gear, Tents, Books, Music, Knives, Tomahawks, Oak kegs and other assorted good for people or organizations reenacting the periods from 1750 to 1840.

Kannik's Korner –

www.kannickskorner.com

Publishers of authentic historic clothing patterns, hand sewing books, and designers and producers of counted cross stitch kits of historic sites.

Past Patterns

PastPatterns.com/

Accurate Federal, Jacksonian, Civil War, Gilded Age, Edwardian and WWI up to WWII Clothing Patterns for Men, Women and Children. Past Patterns has manufactured historical clothing patterns and sold them through the mail since 1979.

Robert Land Footwear

<http://www.RobertLandHistoricShoes.com>

Custom and in-stock period footwear from 18th C. boots to Victorian dance slippers.

THE SILLY SISTERS

www.silysisters.com FASHIONS FOR THE LADY REFINED OR RUSTIC AND OTHER ITEMS TOO TEDIOUS TO MENTION

Sense & Sensibility Patterns

Sensibility.com

Online store selling sewing patterns for women and children from Regency through early 20th Century.

Truly Victorian - patterns

TrulyVictorian.com

Costume patterns from the 1840's to the 1890's. Specializing in the Bustle Era.

Real Women's Clothing Directory

DemodeCouture.com/realvict

Directory of photographs of extant women's clothing from the mid-18th c. through the edwardian era in museums around the world. (1600 - 1919)

The Roaring Twenties: The 1920s in History

www.1920-30.com

A historical snapshot of life in the 1920s. The information, taken largely from books and periodicals of the period, captures how life was in the U.S.A and the World during the 1920's - a time that is often referred to as the "Roaring Twenties" - a boisterous period characterized by rapidly changing lifestyles, financial excesses, and the fast pace of technological progress

Lehman's Specializes in Non- Electric Old-Fashioned Products located in Kidron, Ohio

www.lehmans.com

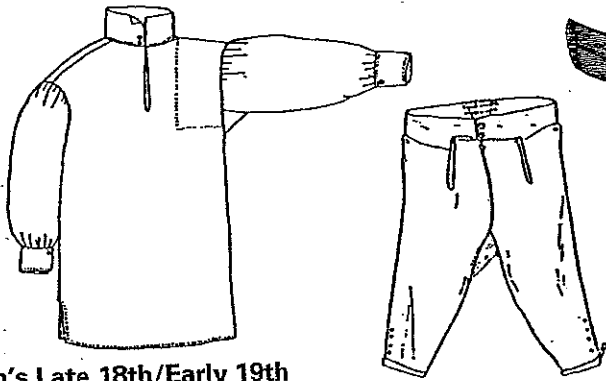
Traditional or historical

- Apple Peelers
- Bottle Cappers
- Brass cowbells
- Cast Iron cookware
- Crank butter churns
- Foot pedal sewing machines
- Graniteware
- Grist mills
- Hand crank ice cream machines
- Hand driven washing machines
- Hand water pumps
- Kerosene lamps
- Pitchforks
- Water pump
- Wood and coal cook stoves
- Wooden barrels
- Wooden buckets

Foods etc.

Deborah's Pantry of test-driven and hard to find culinary supplies

www.deborahspantry.com



Men's Late 18th/Early 19th Century Work Shirt

With either epaulet or shoulder reinforcement. Front opening, high collar.

Men's neck sizes 14 - 17 1/2 all in one envelope

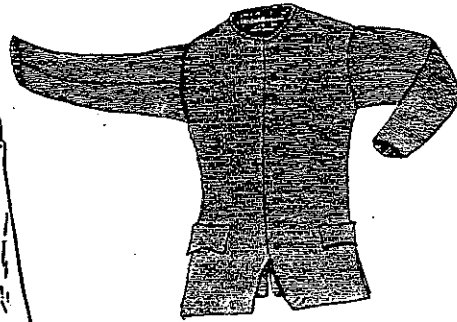
PPI-756 - \$9.00

Men's 18th Century Breeches

Button-up front breeches, back laces for waist fit. Make in velvet, tow or leather.

Men's 34/36/38, 40/42/44, 46/48/50

PPI-776 - \$11.00

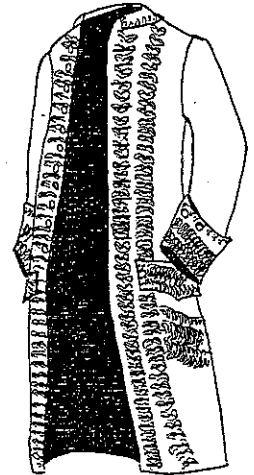


1770 Civilian Coat

Close-fitting coat with tight sleeves and round neck. Functional pockets

Men's 34/36/38, 40/42/44, 46/48/50

PPI-730 - \$12.00

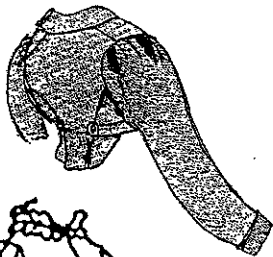


1770's Dress Coat

Colonial Era full formal coat with decorated cuffs, pockets and front

Men's 34/36/38, 40/42/44, 46/48/50

PPI-731 - \$13.00



1809 Spencer Jacket

Two different jackets in one pattern. The first has a pleated tail and rounded collar. The second has ruffles at the neck and sleeves.

Misses sizes 6/8/10, 12/14/16, 18/20/22

PPI-461 - \$10.00



Men's 18th Century Waistcoat

Round neck button-front waistcoat worn under coats. Make in brocades for upper classes, plain fabric for lower.

Men's 34/36/38, 40/42/44, 46/48/50

PPI-745 - \$10.50

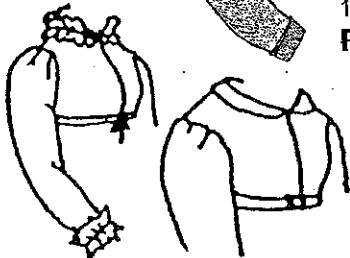


1809 Day Wear

This high-waisted dress from the empire period has detachable lower sleeves. Short sleeve version may be decorated for evening wear

Misses sizes 6/8/10, 12/14/16, 18/20/22

PPI-460 - \$15.00

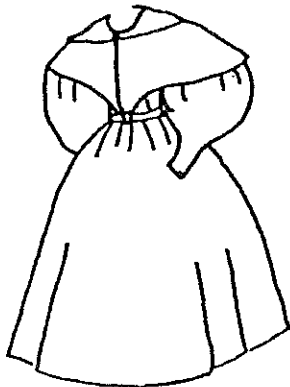


1830's Day Dress & Pelerine

Slightly high waisted bodice with gigot sleeves is covered with a colored pelerine.

Misses sizes 6/8/10, 12/14/16, 18/20/22

PPI-440 - \$11.00

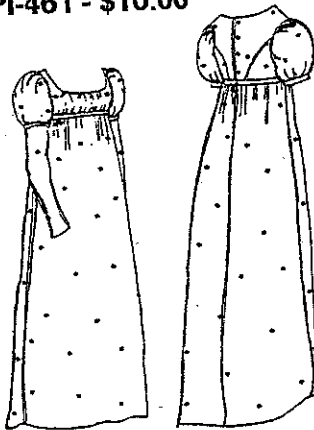


1838 Bonnet and Bonnet Cap

City bonnet with cap under the bonnet, from a Ladies' Work Book of 1838

One Size

PPI-819 - \$9.00



1837 Day Dress

A day dress with smocked sleeve top and pleated berthe on the front

Misses sizes 6/8/10, 12/14/16, 18/20/22

PPI-445 - \$11.00



1845 Day Dress

A day dress with sloping vertical pleats that narrow the look of the waist

Misses sizes 6/8/10, 12/14/16, 18/20/22

PPI-447 - \$11.00

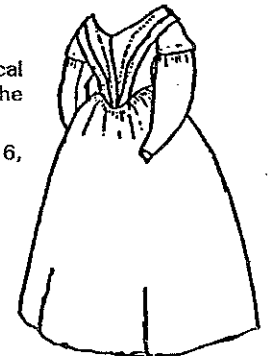


Chemisette

Used to fill in the neckline of day wear. Worn from the 1830's through the 1860's

All sizes

PPI-400 - \$4.50



PATTERNS OF HISTORY



An American Revolution Bicentennial Project of the State Historical Society of Wisconsin

These patterns were drafted from 19th century originals in the collection of the State Historical Society of Wisconsin. Patterns are fully documented and clearly marked, and include directions for hoops and petticoats as well as period fashion notes. For intermediate to advanced sewers. State individual size or size group when ordering.



1835 Afternoon Dress

Has large gigot or "leg-o-mutton" sleeves. Full, ankle length skirt is attached to the separate high-waisted bodice with hooks and eyes. Removable double pelerine cape. Original was made in brown watered silk.

State sizes 10, 12, or 14
PPH-1835 - \$14.00



1857 Afternoon Costume

Two-piece drop-waisted outfit worn over a full round hoop skirt. Has double tiered pagoda sleeves. Original was made of green moire striped taffeta with silk fringe and was worn Mar. 4, 1857 to the inaugural address of President Buchanan.

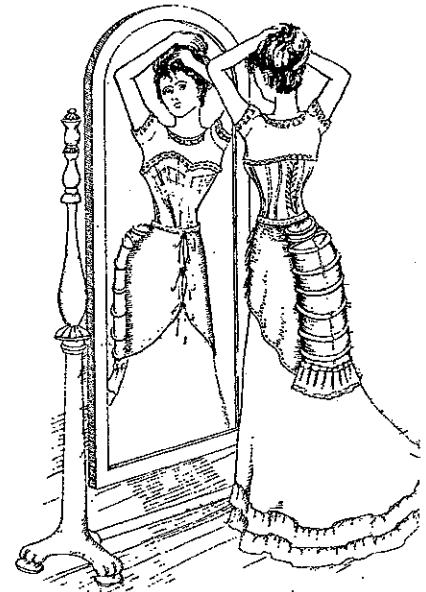
State size 10, or 14
PPH-1857 - \$14.00



1865 Paletote Jacket Ensemble

Skirt and paletot jacket ensemble, to be worn over a full oval hoop. Jacket is short-waisted and loose-fitting. Skirt is very full. Wedding dress of 1865, original made of cream silk and wool blend trimmed with black lace and black velvet ribbon.

State size 10, or 14
PPH-1865 - \$14.00



1873 Bustle - Improved Version

Long narrow bustle shape can be reproduced by the home sewer. To maintain the correct shape, add light cushion. Essential for 1870 dresses. Includes construction guide, period fashion notes.

One size
PPH-1873 - \$7.50

1840's Day Dress

Simple dress has narrow sleeves and "Marie Stuart" waist. Soft skirts given shape by cartridge pleating, and are worn over full gathered petticoats. Original made in cotton furniture check in green and brown on cream.

State size 10, 12, or 14
PPH-1840 - \$14.00



1850-60's Pioneer Dress & Sunbonnet

Lightly boned, lined front-closing bodice has unusual two-piece sleeve, drop-shoulder yoke. Skirt is attached to front-closing waistband. Sunbonnet is traditional poke style, play or fancy.

Multisized 10-20

Dress PPP-803 - \$13.00

Sunbonnet PPP-802 \$6.50 Adult one size



1860's Homestead Dress

Everyday housedress with gored construction and false hem. No waistline.

Multisized 10-20

PPP-711 - \$15.00

1860's Gathered Bodice

Gathered or pleated front with choice of bishop sleeves or peg-top sleeves which hook at the wrist.

Multisize 10-20

PPP-701 - \$12.00



1860's Fitted Bodice

Classic bodice of the period with front darts and French back. Full or modified pagoda sleeves.

Multisized 10-20

PPP-702 - \$12.00



1860's Ball Gown Bodice

Uses gores to achieve a sleek look. Two sleeve options.

Multisize 10-20

PPP-704 - \$12.00

1860's Corset - Improved!

Front-closing, back-lacing corset with six gores and 10 stays supports the bust and shapes the hips.

Multisized 8-26, b,c,d, cup included

PPP-703 - \$9.00

Kit with parts, pattern, stays (fabric not included) - State size group 8-12, 14-18, 20-26

PPK-703 Kit - \$45.00

1860's Skirt

Gathered, cartridge pleated, or double inverted pleats into a back opening over-hoop skirt. Use with any 700 series bodice.

Multisized 10-20

PPP-700 - \$12.00





1878 Men's Sacque Suit - Improved Version

Three-piece casual suit without waistline seam. Appropriate for all but the dressiest occasions. Wear without the jacket for working man's vest and trousers attire. Period notes explain adaptations for earlier and later variations.

State multisize group 38/40/42 or 44/46/48

PPH-18761 - \$17.00

| Sizes | 8 | 10 | 12 | 14 | 16 | 18 |
|------------------------------------|------------------------------------|------------------------------------|--|------------------------------------|--|-----------------------------------|
| Bust | | | | | | |
| Inches | 32 ¹ / ₂ -33 | 33 ¹ / ₂ -34 | 34 ¹ / ₂ -35 | 35 ¹ / ₂ -37 | 37 ¹ / ₂ -38 ¹ / ₂ | 39-40 ¹ / ₂ |
| Cm | 82.6-83.8 | 85.1-86.4 | 87.6-88.9 | 90.2-94 | 95.3-97.8 | 99.1-102.9 |
| Waist | | | | | | |
| Inches | 23 ¹ / ₂ -24 | 24 ¹ / ₂ -25 | 25 ¹ / ₂ -26 ¹ / ₂ | 27-28 | 28 ¹ / ₂ -29 ¹ / ₂ | 30-31 ¹ / ₂ |
| Cm | 59.7-61 | 62.2-63.5 | 64.8-67.3 | 68.6-71.1 | 72.4-74.9 | 76.2-80 |
| Hips | | | | | | |
| Inches | 34 ¹ / ₂ -35 | 35 ¹ / ₂ -36 | 36 ¹ / ₂ -37 ¹ / ₂ | 38-39 | 39 ¹ / ₂ -40 ¹ / ₂ | 41-42 ¹ / ₂ |
| Cm | 87.6-88.9 | 90.2-91.4 | 92.7-95.3 | 96.5-99.1 | 100.3-102.9 | 104.1-108 |
| Back Length (Neck to Waist) | | | | | | |
| Inches | 15 | 15 ¹ / ₄ | 15 ¹ / ₂ | 15 ³ / ₄ | 16 | 16 ¹ / ₄ |
| Cm | 38.1 | 38.7 | 39.4 | 40 | 40.6 | 41.3 |

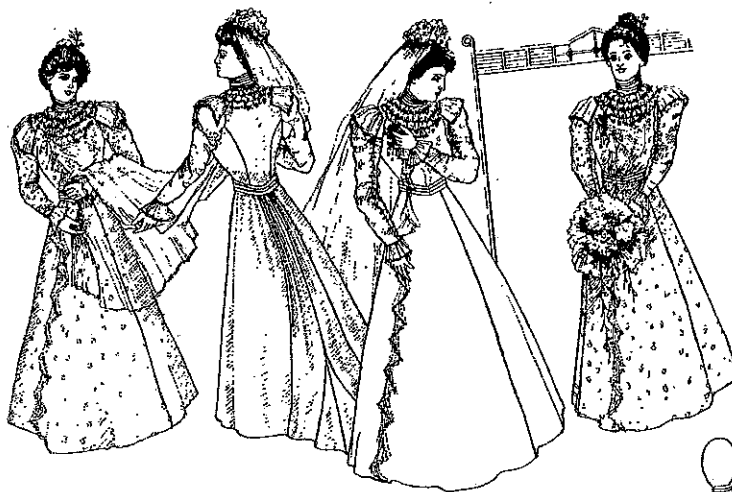


1888 Reception Toilette

Two-piece ensemble includes a tailored bodice, tight sleeves, off-the-floor skirt and prominent bustle. Original was of gray silk faille with white silk neck inset and gold braid. Includes instructions for simple 1880's bustle and illustrations of the matching hat

State multisize group 8/10/12 or 14/16/18

PPH-1888 - \$17.00



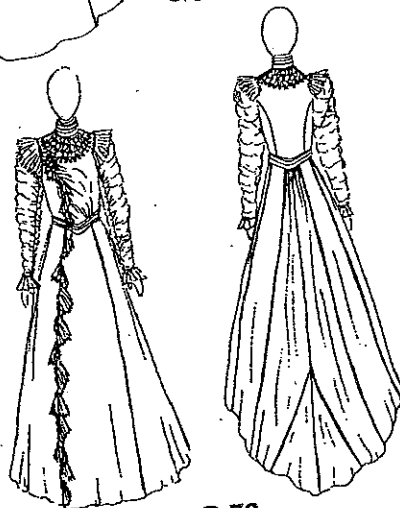
1899 2-pc. Wedding Dress - NEW!

Slightly puffed bodice with a yoke of shirred chiffon and pearl beads. Sleeves gathered at inner seam and have accordian-pleated chiffon at the cuffs and sleeve caps. Pleated chiffon drapes down the right side of the bodice front. High pleated collar and V-waistline. Gored skirt with train is fitted at the hips and flares to hem. Skirt is trimmed with pleated chiffon down the right side.

Original was made of Duchesse satin.

State size group 8/10/12 or 14/16/18

PPH-1899 - \$22.00



1896 Walking Suit - Improved Version

This is the indispensable tailored suit of the 1890's. Cut to mid-calf, it can be a bicycle suit as well. Features huge leg-o-mutton sleeves popular 1893-96, with bows on the shoulders. Mock bodice and jacket are one piece. Original made of navy blue wool broadcloth with bodice front and collar of woven patterned silk. Includes fabric and color guide, period notes, detailed construction instructions.

State multisize group 8/10/12 or 14/16/18

PPH-1896 - \$22.00



PAC-7987
1919 Bust 36 - \$13.50



PAC-9254
1920 Bust 36 - \$9.50



PAC-1150
1920 Bust 34 - \$11.00



PAC-8450
1919 Bust 34 - \$9.50



Past Patterns Attic Copies

These patterns are exact duplicates of original patterns published from 1900 through 1950. They include printed or photocopied copies of the original instructions. Please note that you are ordering in one size only, and the pattern is available only in the size shown. The approximate date of each pattern is also shown. Please do not confuse the date with the pattern order number!



PAC-8159
1919 Bust 34 - \$14.00



PAC-8322
1919 Bust 34
- \$13.00



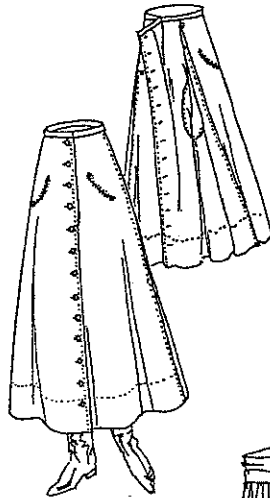
PAC-8268
1920 Bust 38 - \$9.50



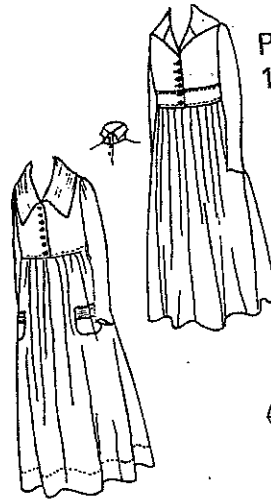
PAC-7986
1920 Bust 38 - \$11.00



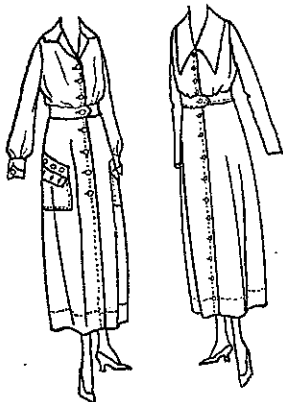
PAC-8998
1920 Bust 38
- \$10.00



PAC-6306
1920 Waist 28
- \$9.00



PAC-7394
1920 Bust 36
- \$11.00



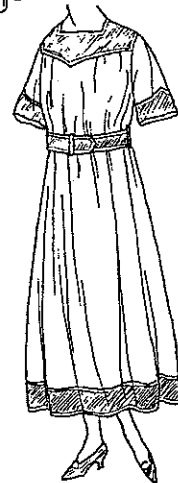
PAC-8025
1920 Bust 40 - \$11.50



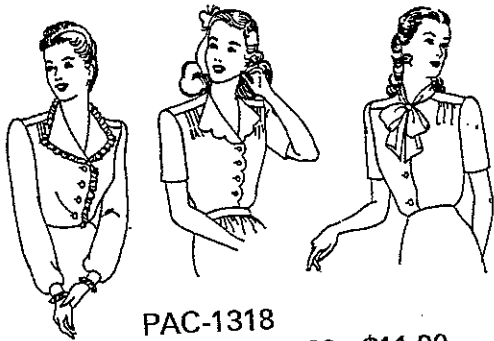
PAC-2307
1920 Bust 38 - \$11.00



PAC-9412
1920 W26 - \$9.00



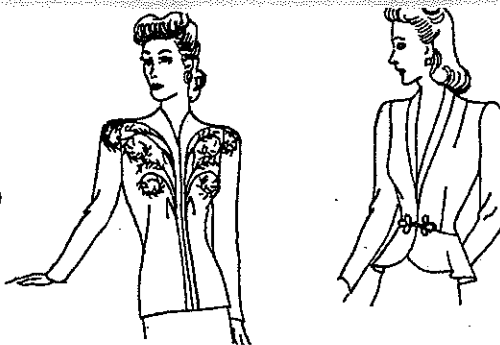
PAC-8607
1920-21 Bust 36 - \$11.00



PAC-1318
1940's Bust 32 - \$11.00



PAC-1680
1940's Bust 30 - \$11.00

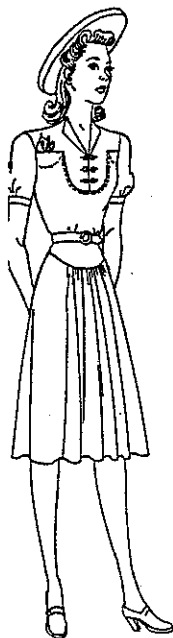


1941 - 1950

Past Patterns Attic Copies

These patterns are exact duplicates of original patterns published from 1900 through 1950. They include printed or photocopied copies of the original instructions. Please note that you are ordering in one size only, and the pattern is available only in the size shown. The approximate date of each pattern is also shown. Please do not confuse the date with the pattern order number!

PAC-4073
1940's Bust 32 - \$16.00



PAC-5188
1940's Bust 32 - \$14.00



PAC-3443
1940's Bust 36 - \$14.00



PAC-4212
1940's Bust 32
- \$14.00



PAC-501
1940's Bust 34 - \$16.00



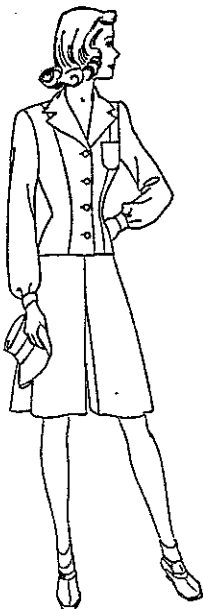
PAC-3439
1940's Bust 34
- \$12.50



PAC-9587
1940's Bust 34 - \$12.50



PAC-4949
1940's Bust 34 - \$14.00



PAC-5413
1940's Bust 30
- \$14.00

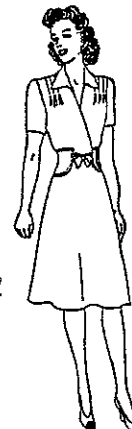


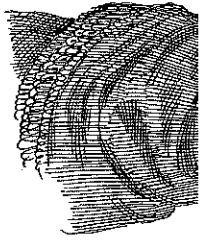
PAC-5688
1940's Bust 30
- \$14.00



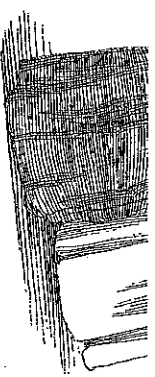
PAC-9154
1940's Bust 34
- \$16.00

PAC-4142
1940's Bust 32
- \$14.00

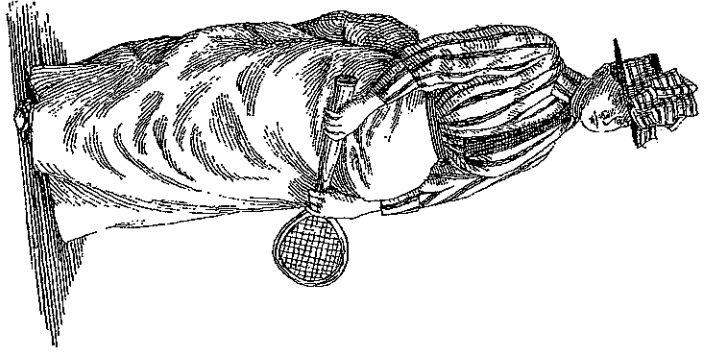




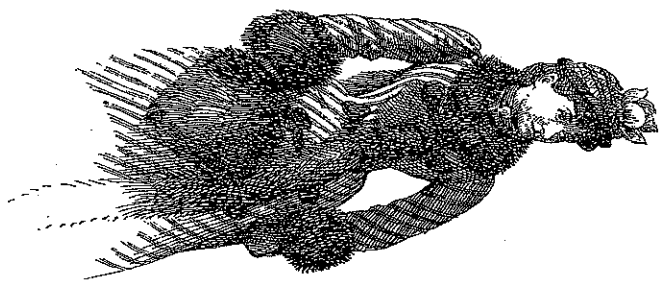
Young ladies of the '80s



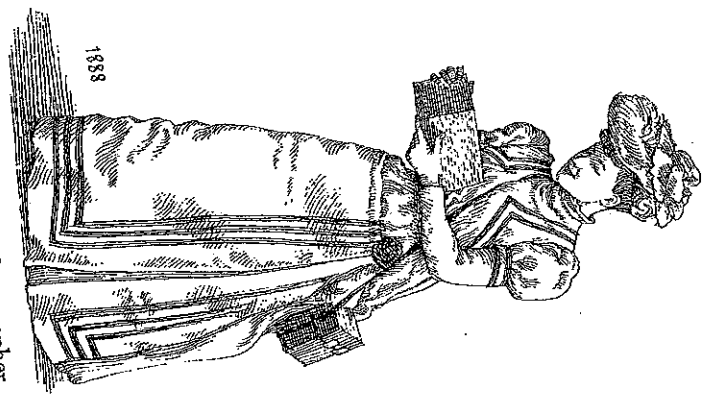
1880s-90s



Tennis enthusiast

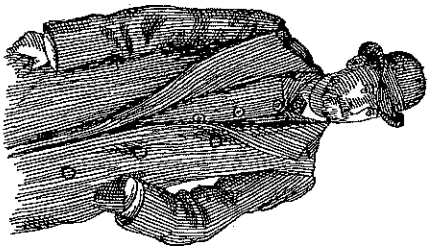


Correct street costume

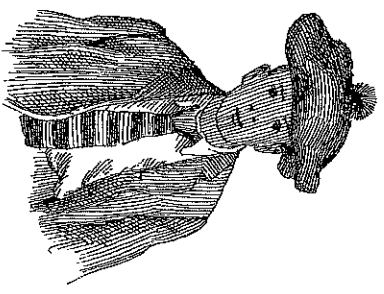


Amateur photographer

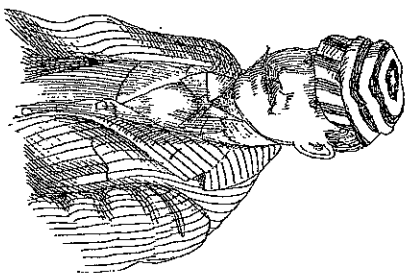
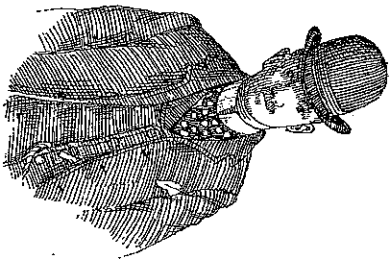
1888



George Eastman



Cherry Valley sports





Actress



The business suit at its height

